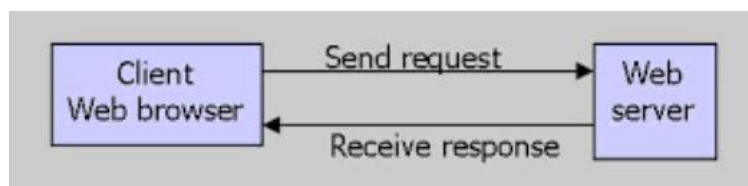


## Web Browser

### *What is a Web Browser?*

Almost everybody knows what a **web browser** (or just **browser**) is. It is a software application used to access the material found on the World Wide Web.

As a client/server model, the browser is the **client** run on a computer or mobile device that contacts the Web **server** and requests information. The web server sends the information back to the browser which displays the results.



### *Today's Web Browsers*

The icons of five of the most common web browsers are shown in the following diagram. The browsers, from left to right are:

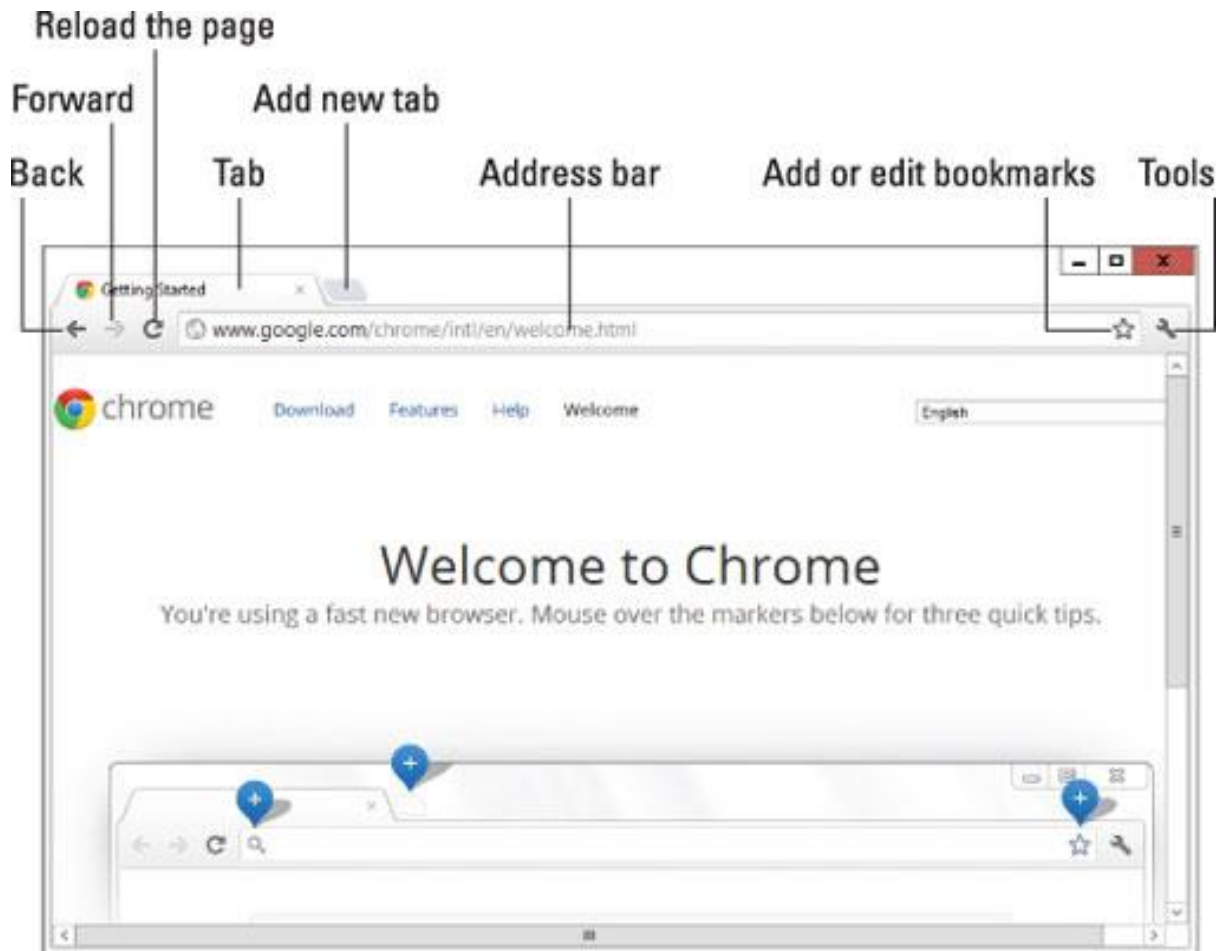
- Chrome (by Google)
- Safari (by Apple)
- Opera (by Opera Software)
- Internet Explorer (by Microsoft)
- Firefox (by Mozilla Foundation)



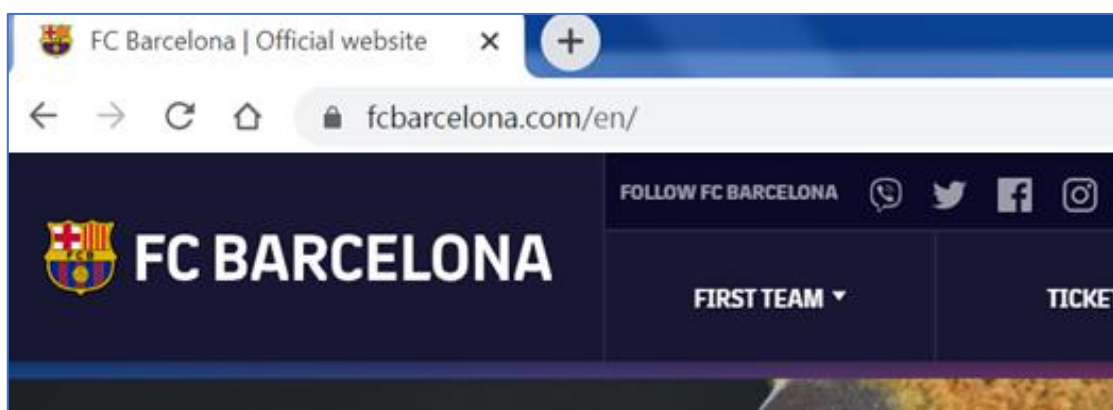
### *Features of Web Browsers*

In the following examples we will use Chrome because at present (2020) it is the mostly-used browser.

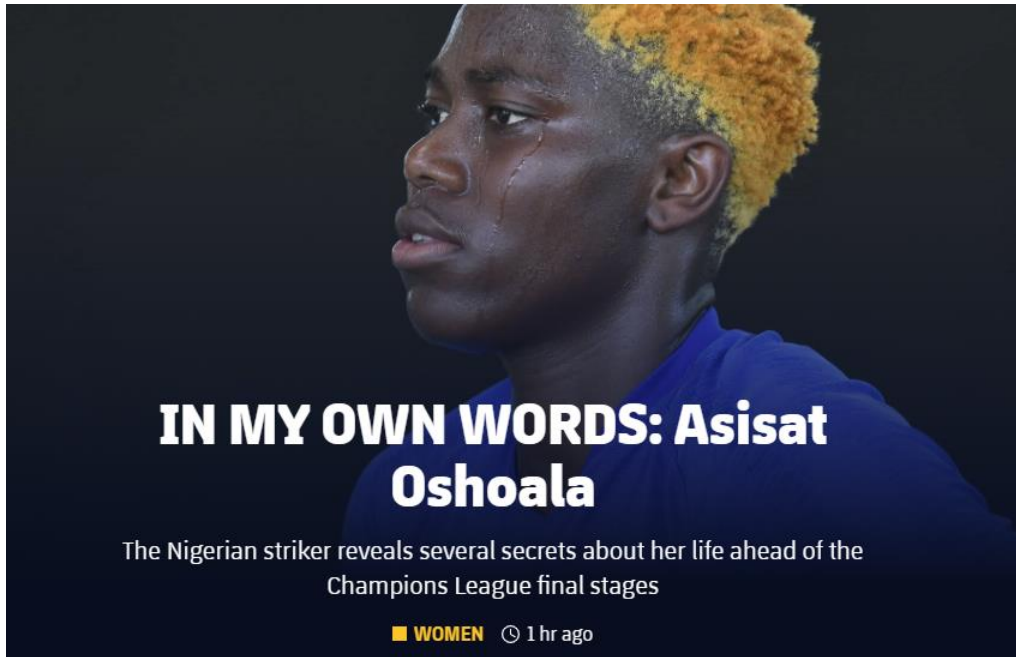
The following diagram shows the name of parts of a Chrome interface.



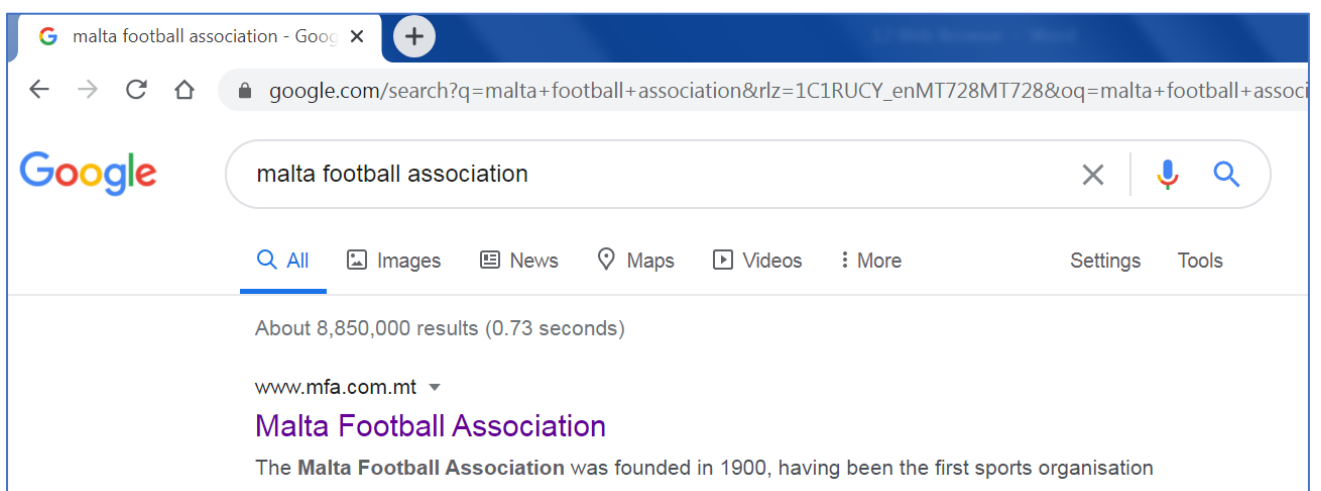
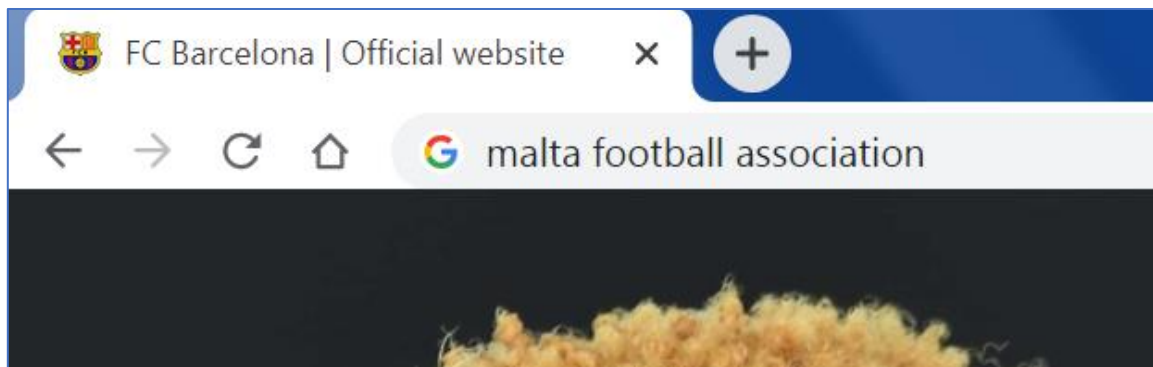
- View a Web Page with a Known Web Address. If you know the address of a website that you want to look at, then write this address at the address bar and press Enter. The web page will then show in your browser.



- Clicking on Links. Refer to the picture below. The sentence “IN MY OWN WORDS: Asistat Oshoala” is a link. This means that if you click on it, it will take you to another web page. Note how the cursor changes when it is moved on the link.

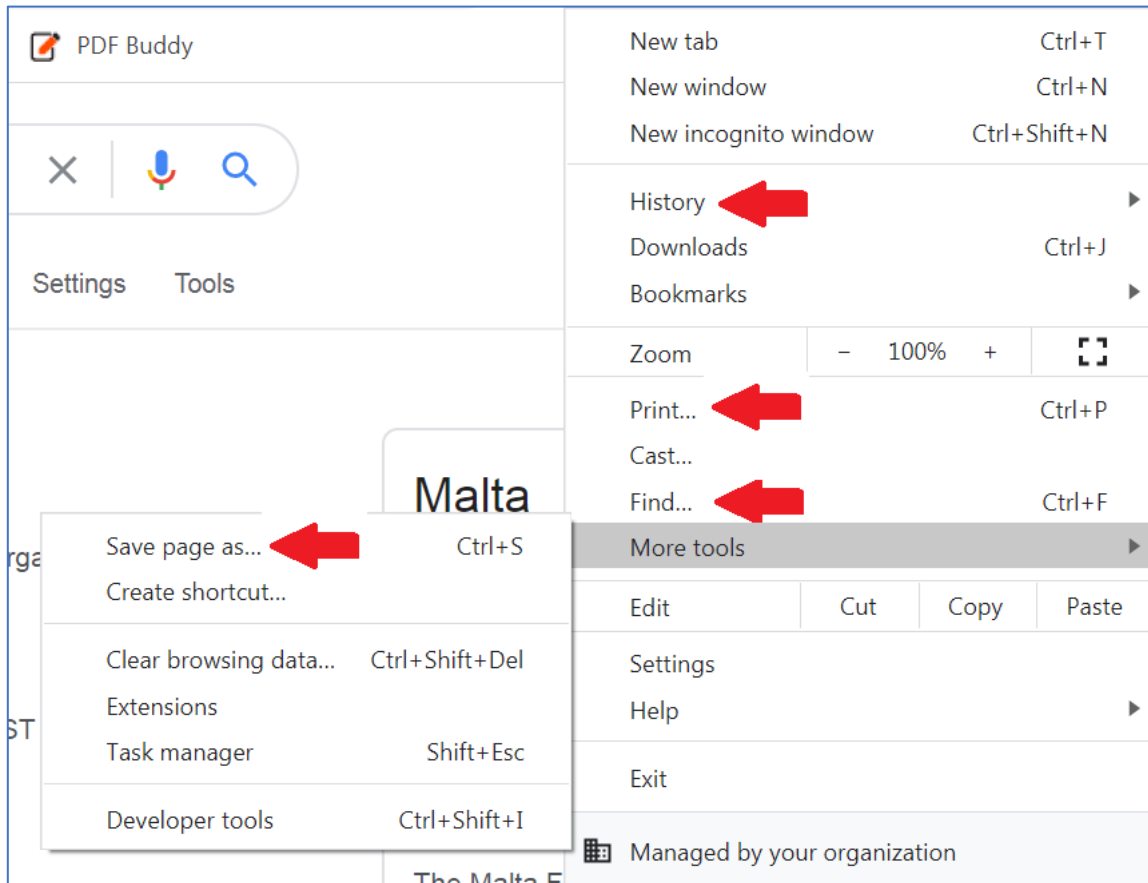


- Search about a Topic. Suppose you want to know about the Malta Football Association. You type your subject of interest inside the address bar (even though what you write is not the address of a web page) and the browser will use its search engine to find you web sites (a huge number of them) that relate to the subject of your interest. This is shown in the following two diagrams.



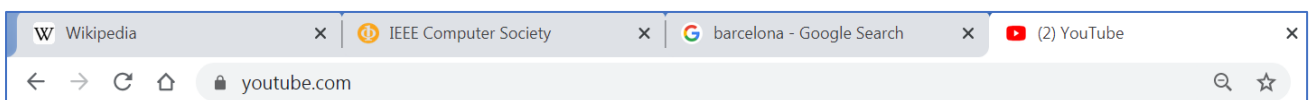
Note that the website is making use of the search engine Google to perform the search.

- Other features can be seen from the task menu i.e. viewing the history of the pages searched previously, printing, searching within the page, saving the page etc.



Other features (not all web browsers may have all of these features):

- **Task manager** that shows you how much memory and CPU usage each tab and plugin is using. A **plugin** is a software add-on that is installed on a program (in our case a web browser), enhancing its capabilities. A plugin, for example, can make it possible to view particular videos.
- You can have more than one tab open as shown in the picture below.



- Open a specific set of web pages whenever the web browser starts.
- Zoom out and zoom in.
- ... many more.